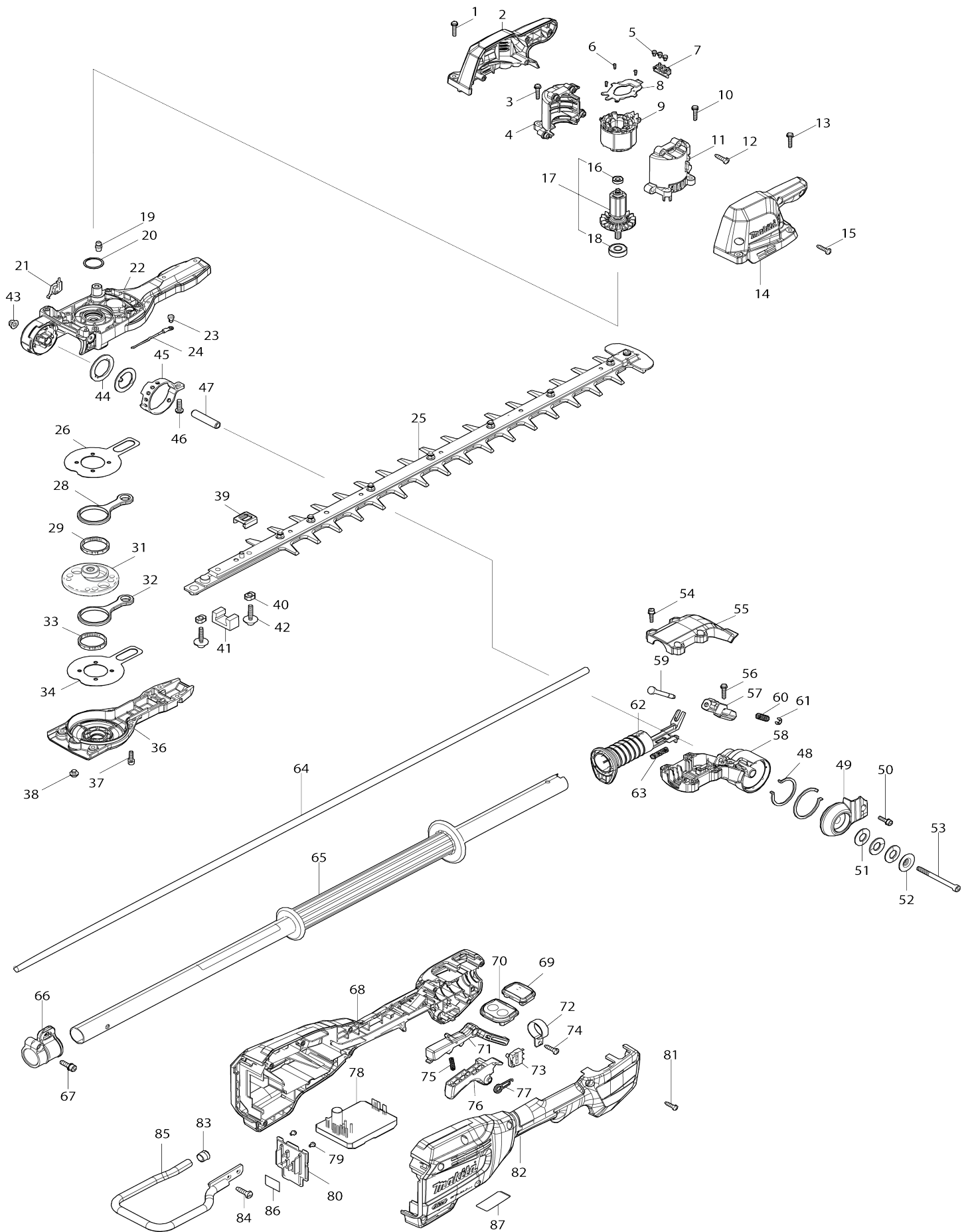


# Model No.UN001G 600MM CRDLSS POLE HDG TRIMMER



Model No.UN001G 600MM CRDLSS POLE HDG TRIMMER

Item No.	Parts No.	Description	Interc hang eabilit y	Q'ty	New/ Old	Note1	Note2
001	911138-5	P.H.SCREW M4X20 WITH WR		2			
002	1830N2-0	HOUSING SET		1			
D10		INC. 14					
003	911138-5	P.H.SCREW M4X20 WITH WR		2			
004	1830N0-4	MOTOR HOUSING SET		1			
D10		INC. 11					
005	652069-6	FLAT HEAD SCREW M3X6		3			
006	266490-9	TAPPING SCREW PT 2X6		3			
007	638A88-2	LEAD UNIT		1			
008	620N82-6	CONTROLLER B		1			
009	629A75-2	STATOR		1			
010	911138-5	P.H.SCREW M4X20 WITH WR		2			
011	1830N0-4	MOTOR HOUSING SET		1			
D10		INC. 4					
012	266326-2	TAPPING SCREW 4X18		4			
013	911138-5	P.H.SCREW M4X20 WITH WR		2			
014	1830N2-0	HOUSING SET		1			
D10		INC. 2					
015	266326-2	TAPPING SCREW 4X18		4			
016	210215-3	BALL BEARING 695ZZ		1			
017	510598-4	ROTOR ASSEMBLY		1			
D10		INC. 16,18					
018	210005-4	BALL BEARING 608DDW		1			
019	243107-1	GREASE NIPPLE		1			
020	213961-7	O RING 22		1			
021	632V50-5	SWITCH UNIT		1			
022	137154-1	GEAR HOUSING ASS'Y		1			
C10	263002-9	RUBBER PIN 4		1			
C20	263005-3	RUBBER PIN 6		4			
023	652014-1	PAN HEAD SCREW M4X8		1			
024	638A25-6	LEAD UNIT		1			
025	1914E7-7	SHEAR BLADE 600R SET		1			
C10	188605-7	OIL VESSEL SET		1			
C20	257859-8	SLEEVE 5		2			
C30	347A61-8	BRUNCH CATCHER		1			
C40	265C90-0	PAN HEAD SCREW M5X10 WITH WR		1			
026	347361-0	FRICITION PLATE		1			
028	347662-6	CONNECTING ROD		1			
029	212229-8	NEEDLE CAGE 315		1			
031	137187-6	HELICAL GEAR ASS'Y		1			
C10	210029-0	BALL BEARING 608ZZ		1			
C20	211499-6	BALL BEARING 626ZZ		1			
032	347662-6	CONNECTING ROD		1			
033	212229-8	NEEDLE CAGE 315		1			
034	347361-0	FRICITION PLATE		1			
036	137155-9	GEAR HOUSING COVER ASS'Y		1			
C10	263002-9	RUBBER PIN 4		1			

037	922128-3	HEX. SOCKET HEAD BOLT M4X16	6			
038	266559-9	H.S.BUTTON HEAD BOLT M6X4	1			
039	422B58-5	DUST SEAL	1			
040	257859-8	SLEEVE 5	2			
041	443159-4	SEAL	1			
042	265A89-3	H.S.H.BOLT M5X25 WITH WR	2			
043	252286-4	COLLARED HEX.LOCK NUT M5-8	1			
044	347C46-6	LOCK WASHER 27	2			
045	347C47-4	ANGULAR HOLDER	1			
046	265487-5	H.S. BUTTON HEAD BOLT M5X16	1			
047	257761-5	SLEEVE 6	1			
048	347C45-8	LOCK WASHER 39	2			
049	312F28-5	SIDE COVER	1			
050	922128-3	HEX. SOCKET HEAD BOLT M4X16	1			
051	232868-8	CONED DISK SPRING 12	3			
052	253603-1	DISK WASHER 5	1			
053	922912-6	HEX. SOCKET HEAD BOLT M5X65	1			
054	922128-3	HEX. SOCKET HEAD BOLT M4X16	5			
055	312F27-7	PIPE HOLDER COVER 24	1			
056	911138-5	P.H.SCREW M4X20 WITH WR	1			
057	4130D3-7	STOPPER PIN HOLDER	1			
058	312F26-9	PIPE HOLDER 24	1			
059	327D58-1	STOPPER PIN	1			
060	231294-8	COMPRESSION SPRING 6	1			
061	961011-9	STOP RING E-4	1			
062	4130D4-5	SLIDE GRIP 24	1			
063	232299-1	COMPRESSION SPRING 5	1			
064	638A86-6	LEAD UNIT	1			
065	141V73-7	PIPE 24 COMPLETE	1			
C10	8076E3-4	CAUTION LABEL	1			
066	168478-4	HANGER	1			
067	922228-9	H.S.H.BOLT M5X18 WITH WR	1			
068	1830V9-2	GRIP HOUSING SET	1			
C10	263005-3	RUBBER PIN 6	2			
D10		INC. 82				
069	141V75-3	INDICATION CIRCUIT COMPLETE	1			
070	141V77-9	SWITCH CIRCUIT COMPLETE	1			
071	141V72-9	LOCK OFF LEVER COMPLETE	1			
072	346248-3	CLAMP 24	1			
073	632V49-0	SWITCH UNIT	1			
074	266326-2	TAPPING SCREW 4X18	1			
075	233101-1	COMPRESSION SPRING 4	1			
076	4130D2-9	SWITCH LEVER	1			
077	233612-6	TORSION SPRING 10	1			
078	620N88-4	CONTROLLER	1			
079	652031-1	PAN HEAD SCREW M3X6	2			
080	632V24-6	TERMINAL UNIT	1			
081	266326-2	TAPPING SCREW 4X18	9			
082	1830V9-2	GRIP HOUSING SET	1			
C10	263005-3	RUBBER PIN 6	2			
D10		INC. 68				

083	422230-7	CAP		1		
084	266420-0	TAPPING SCREW 5X20		2		
085	327D60-4	BATTERY GUARD		1		
086	8146A7-1	UN001G SERIAL NO. LABEL		1		
087	8145Y6-5	UN001G NAME PLATE		1		
A01	122D94-0	BAND ASSEMBLY		1		
A02	458414-1	BLADE COVER 600		1		
E03	807950-8	SOUND 95DB LABEL		1		
F01	1910T2-8	CHIP RECEIVER 600 SET		1		
F02	1914E7-7	SHEAR BLADE 600R SET		1		
F03	199450-5	GREASE VESSEL SET		1		

Please state Parts No. when your order.

Print Date 10. 09. 2024