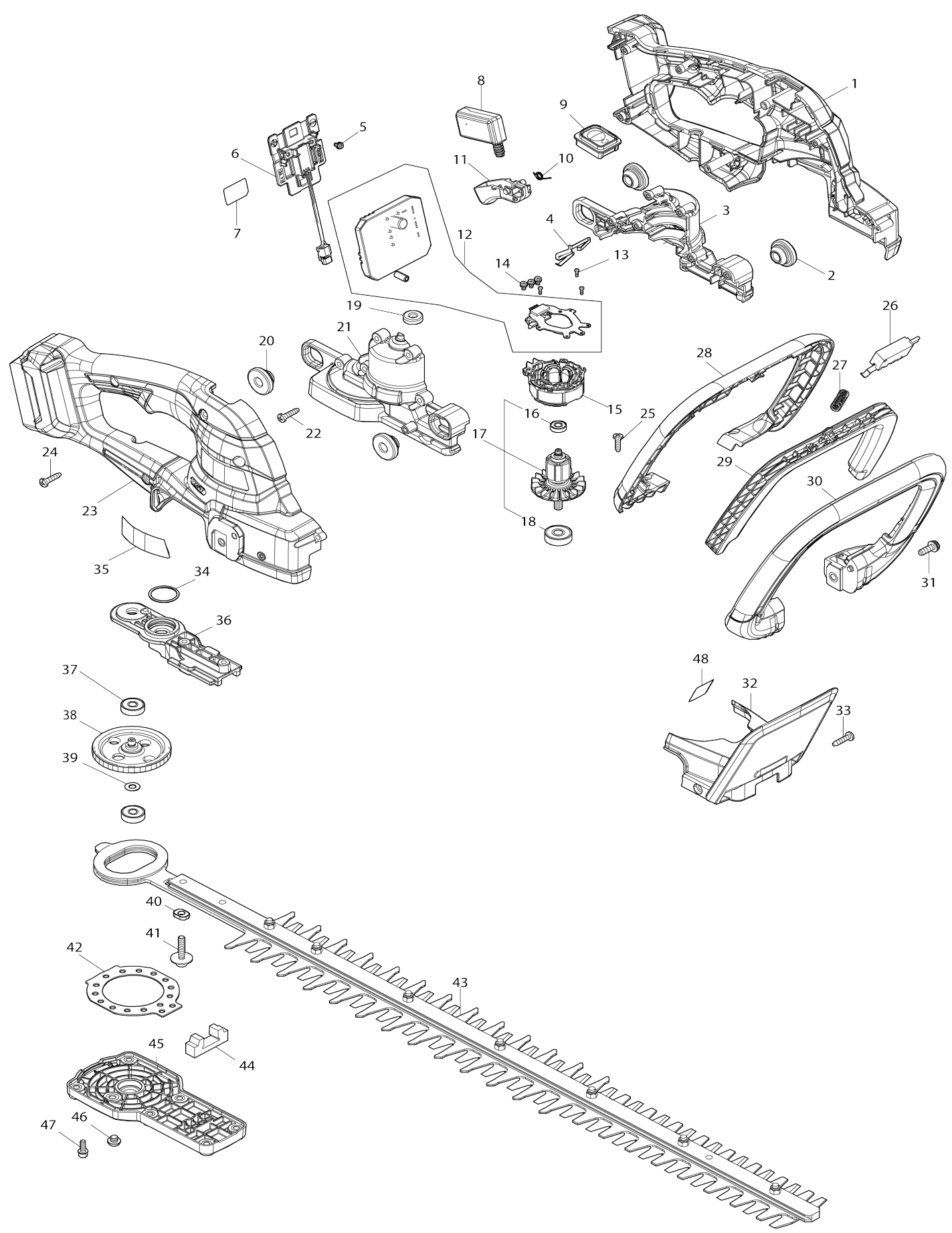


Model No.UH021G 600MM CORDLESS HEDGE TRIMMER



Model No.UH021G 600MM CORDLESS HEDGE TRIMMER

| Item No. | Parts No. | Description | Interchangability | Q'ty | New/Old | Note1 | Note2 |
|----------|-----------|---------------------------|-------------------|------|---------|-------|-------|
| 001 | 1830R7-8 | HANDLE SET | | 1 | | | |
| C10 | 263005-3 | RUBBER PIN 6 | | 2 | | | |
| D10 | | INC. 23 | | | | | |
| 002 | 424394-3 | RUBBER RING 8 | | 2 | | | |
| 003 | 1830S8-3 | MOTOR HOUSING SET | | 1 | | | |
| D10 | | INC. 21 | | | | | |
| 004 | 654909-4 | EARTH PLATE | | 1 | | | |
| 005 | 652031-1 | PAN HEAD SCREW M3X6 | | 2 | | | |
| 006 | 632V23-8 | TERMINAL UNIT | | 1 | | | |
| 007 | 8146T8-2 | UH021G SERIAL NO. LABEL | | 1 | | | |
| 008 | 632V58-9 | SWITCH UNIT | | 1 | | | |
| 009 | 141V89-2 | SWITCH CIRCUIT COMPLETE E | | 1 | | | |
| 010 | 232770-5 | TORSION SPRING 6 | | 1 | | | |
| 011 | 413J41-1 | SWITCH LEVER RE | | 1 | | | |
| 012 | 620N59-1 | CONTROLLER | | 1 | | | |
| 013 | 266490-9 | TAPPING SCREW PT 2X6 | | 3 | | | |
| 014 | 652069-6 | FLAT HEAD SCREW M3X6 | | 3 | | | |
| 015 | 629C08-9 | STATOR | | 1 | | | |
| 016 | 211157-4 | BALL BEARING 695ZZ | | 1 | | | |
| 017 | 519764-0 | ROTOR ASSY | | 1 | | | |
| D10 | | INC. 16,18 | | | | | |
| 018 | 210023-2 | BALL BEARING 627DDW | | 1 | | | |
| 019 | 424195-9 | RUBBER RING 6 | | 1 | | | |
| 020 | 424394-3 | RUBBER RING 8 | | 2 | | | |
| 021 | 1830S8-3 | MOTOR HOUSING SET | | 1 | | | |
| D10 | | INC. 3 | | | | | |
| 022 | 266326-2 | TAPPING SCREW 4X18 | | 6 | | | |
| 023 | 1830R7-8 | HANDLE SET | | 1 | | | |
| C10 | 263005-3 | RUBBER PIN 6 | | 2 | | | |
| D10 | | INC. 1 | | | | | |
| 024 | 266326-2 | TAPPING SCREW 4X18 | | 7 | | | |
| 025 | 266326-2 | TAPPING SCREW 4X18 | | 6 | | | |
| 026 | 632V59-7 | SWITCH UNIT | | 1 | | | |
| 027 | 231325-3 | COMPRESSION SPRING 6 | | 1 | | | |
| 028 | 413J39-8 | FRONT HANDLE COVER E | | 1 | | | |
| 029 | 413J40-3 | SWITCH LEVER FE | | 1 | | | |
| 030 | 413J38-0 | FRONT HANDLE E | | 1 | | | |
| 031 | 911223-4 | PAN HEAD SCREW M5X16 | | 2 | | | |
| 032 | 141V87-6 | PROTECTOR COMPLETE | | 1 | | | |
| 033 | 266326-2 | TAPPING SCREW 4X18 | | 2 | | | |
| 034 | 213961-7 | O RING 22 | | 1 | | | |
| 035 | 8146T7-4 | UH021G NAME PLATE | | 1 | | | |
| 036 | 137196-5 | BEARING HOUSING ASS'Y | | 1 | | | |
| C10 | 263002-9 | RUBBER PIN 4 | | 1 | | | |
| 037 | 211016-2 | BALL BEARING 626LLB | | 2 | | | |
| 038 | 141K44-8 | GEAR COMPLETE | | 1 | | | |
| 039 | 253715-0 | FLAT WASHER 6 | | 1 | | | |
| | | | | | | | |

| | | | | | | |
|-----|-----------|-----------------------------|--|---|--|--|
| 040 | 313436-7 | SPACER | | 2 | | |
| 041 | 265A89-3 | H.S.H.BOLT M5X25 WITH WR | | 2 | | |
| 042 | 347A10-5 | PLATE | | 1 | | |
| 043 | 1914G5-5 | SHEAR BLADE 600E SET | | 1 | | |
| C10 | 199450-5 | GREASE VESSEL SET | | 1 | | |
| C20 | 313436-7 | SPACER | | 2 | | |
| C30 | 264013-7 | HEX. LOCK NUT M5-8 | | 7 | | |
| C40 | 257876-8 | RING 5 | | 7 | | |
| C50 | 347990-9 | LOWER PLATE | | 1 | | |
| C60 | 253571-8 | FLAT WASHER 5 | | 4 | | |
| C70 | 265A40-3 | +TRUSS HEAD SCREW M5X20 | | 7 | | |
| C80 | 327982-4 | GUIDE BAR 600E | | 1 | | |
| C90 | 347987-8 | PLATE 600E | | 1 | | |
| 044 | 422904-0 | DUST GUARD | | 1 | | |
| 045 | 413J26-7 | UNDER COVER | | 1 | | |
| 046 | 266559-9 | H.S.BUTTON HEAD BOLT M6X4 | | 1 | | |
| 047 | 922118-6 | HEX. SOCKET HEAD BOLT M4X12 | | 6 | | |
| 048 | 807E85-5 | SOUND 92DB LABEL | | 1 | | |
| A01 | 413L92-6 | BLADE COVER 600 | | 1 | | |
| A02 | 412393-7 | BATTERY COVER | | 1 | | |
| A03 | ***DC40RA | DC40RA FAST CHARGER | | 1 | | |
| D10 | | COMPO-PARTS | | | | |
| A04 | 191B36-3 | BATTERY BL4025 SET | | 1 | | |
| F01 | 1910T2-8 | CHIP RECEIVER 600 SET | | 1 | | |

Please state Parts No. when your order.

Print Date 10. 09. 2024