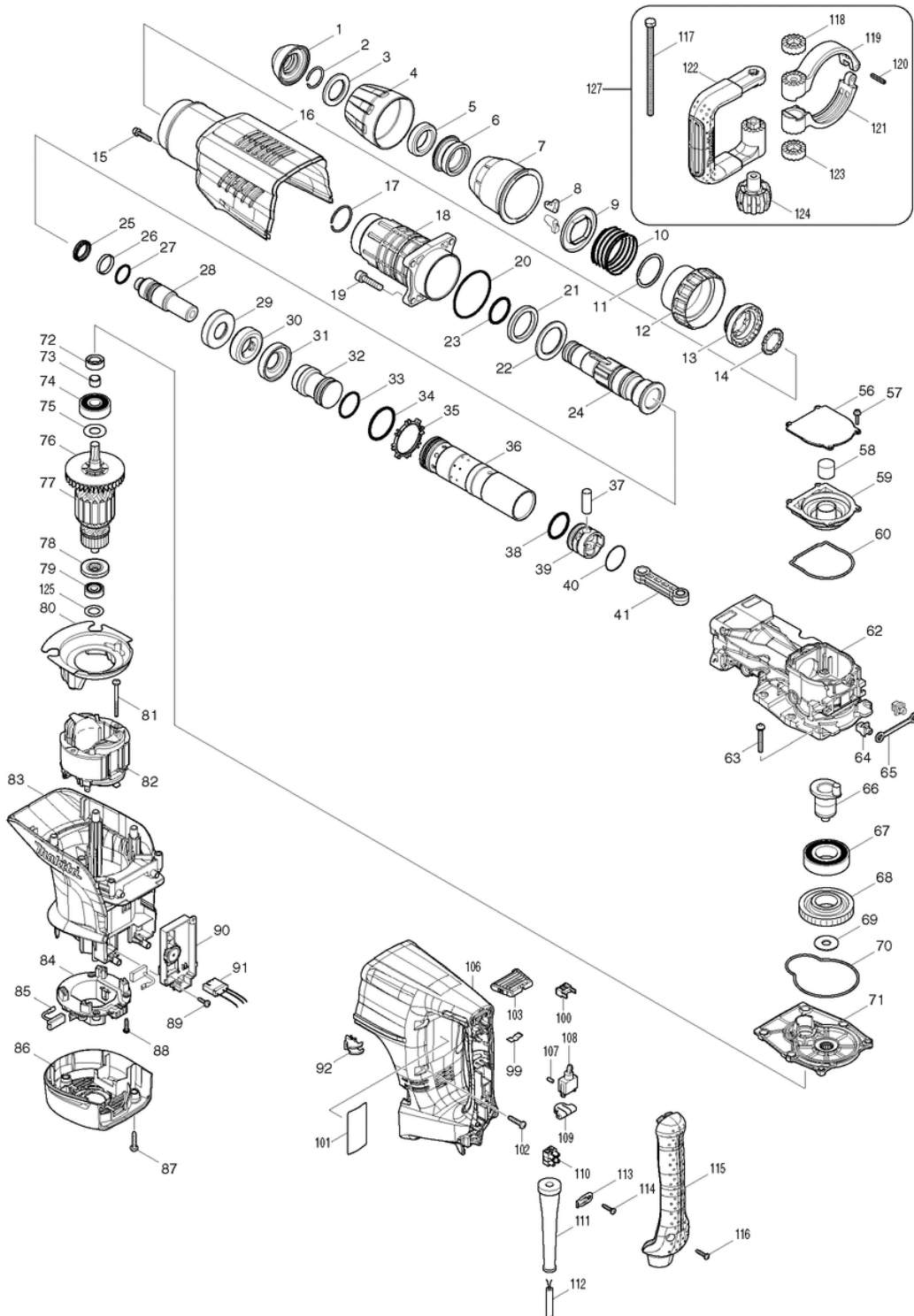




Makita Service Information / Model: HM1203C





Makita Werkzeug Ges.m.b.H.

Airportstr. 4, 2401 Fischamend

Tel: 02232 / 777 00

Fax: 02232 / 777 00 - 40

Mail: verkauf@makita.at

Web: www.makita.at

Makita Service Information / Model: HM1203C

| POS | Bestell-Nr. | Artikelbeschreibung | Stk. | Stk.Preis |
|------|-------------|----------------------------------|------|-----------|
| 1 | 424165-8 | MANŽETA HM1213C | 1 | N/A |
| 2 | 233973-4 | KRÚŽOK PRUŽNÝ 26 HM1213C/1203C | 1 | N/A |
| 3 | 267386-7 | Flat Washer 30 | 1 | N/A |
| 4 | 450894-7 | KRYT DRŽ.NÁSTROJA HM1213C | 1 | N/A |
| 5 | 262147-0 | KRÚŽOK GUMENÝ 30 HM1213C/1203C | 1 | N/A |
| 6 | 324987-5 | Chuck Ring | 1 | N/A |
| 7 | 450895-5 | KRYT UPÍNANIA HM1213C/1203C | 1 | N/A |
| 8 | 310279-8 | POISTKA NÁSTROJA HM1203C/HM1213C | 2 | N/A |
| 9 | 346015-6 | Spring Guide | 1 | N/A |
| 10 | 234086-4 | Compression Spring 56 | 1 | N/A |
| 11 | 961232-3 | POISTNY KRUZOK WR-45 HR5001C | 1 | N/A |
| 12 | 450893-9 | Change Ring Cover | 1 | N/A |
| 13 | 324969-7 | Cahnge Ring | 1 | N/A |
| 14 | 324988-3 | Lock Ring | 1 | N/A |
| 15 | 922243-3 | IMBUSOVA SKRUTKA M5X25 922243-3 | 1 | N/A |
| 16 | 450903-2 | HOUSING COVER | 1 | N/A |
| 17 | 233970-0 | Ring Spring 35 | 1 | N/A |
| 18 | 158858-2 | VORDERGEHÄUSE HM1213C/1203C | 1 | N/A |
| 19 | 922456-6 | SKRUTKA INBUS M8x35 | 4 | N/A |
| 20 | 213720-9 | O-KRÚŽOK 67 | 1 | N/A |
| 21 | 262148-8 | KRÚŽOK GUMM. 39 HM1213C/1203C | 1 | N/A |
| 22 | 267387-5 | PODLOŽKA 39 HM1213C/1203C | 1 | N/A |
| 23 | 213079-4 | O RING 35.5 | 1 | N/A |
| 24 | 324985-9 | DRŽIAK NÁSTROJA HM1203C | 1 | N/A |
| 25 | 213980-3 | X-KRÚŽOK 21 | 1 | N/A |
| 26 | 213431-6 | FLUORIDOVÝ KRÚŽOK 28 HR4000C | 1 | N/A |
| 27 | 213394-6 | O-KRÚŽOK 23 HR5001C/HM1202C | 1 | N/A |
| 28 | 324990-6 | ÚDERNÍK HM1203/1213 | 1 | N/A |
| 29 | 324993-0 | Shoulder Sleeve | 1 | N/A |
| 30 | 262149-6 | KRÚŽOK GUMM. 24 HM1213C/1203C | 1 | N/A |
| 31 | 324993-0 | Shoulder Sleeve | 1 | N/A |
| 32 | 324991-4 | Striker | 1 | N/A |
| 32.2 | 326002-1 | Striker | 1 | N/A |
| 33 | 213499-2 | O-KRÚŽOK 31. | 1 | N/A |
| 34 | 213581-7 | O-KRÚŽOK 44 | 1 | N/A |
| 35 | 450889-0 | KRÚŽOK VENTILU | 1 | N/A |
| 36 | 331848-2 | Cylinder | 1 | N/A |
| 36.2 | 331925-0 | Cylinder new | 1 | N/A |
| 37 | 268121-6 | KOLÍK 12 HR5211/10 | 1 | N/A |
| 38 | 213499-2 | O-KRÚŽOK 31. | 1 | N/A |



Makita Werkzeug Ges.m.b.H.

Airportstr. 4, 2401 Fischamend

Tel: 02232 / 777 00

Fax: 02232 / 777 00 - 40

Mail: verkauf@makita.at

Web: www.makita.at

Makita Service Information / Model: HM1203C

| POS | Bestell-Nr. | Artikelbeschreibung | Stk. | Stk.Preis |
|------|-------------|---------------------------------------|------|-----------|
| 39 | 450961-8 | PIEST HM1203/1213 | 1 | N/A |
| 40 | 213149-9 | O-KRÚŽOK 35 | 1 | N/A |
| 41 | 450890-5 | OJNICA HM1203/11213 | 1 | N/A |
| 56 | 450899-7 | CRANK CAP COVER | 1 | N/A |
| 57 | 911133-5 | SKRUTKA M4x18 | 4 | N/A |
| 58 | 443127-7 | FILTER HR3530/HM1203C | 1 | N/A |
| 59 | 450898-9 | Crank Cap | 1 | N/A |
| 60 | 424166-6 | Seal Ring | 1 | N/A |
| 62 | 318364-1 | CRANK HOUSING COMPLETE | 1 | N/A |
| 63 | 266482-8 | H.S.Botton Head Screw M6x40 | 6 | N/A |
| 64 | 419008-7 | FIXACNE PUZDRO | 2 | N/A |
| 65 | 423366-5 | PLATŇA GUMENNÁ | 1 | N/A |
| 66 | 324994-8 | HRIADEL' KL'UKOVÁ HM1203/1213C | 1 | N/A |
| 67 | 211424-7 | LOŽISKO GULIČKOVÉ HM1213 | 1 | N/A |
| 68 | 226691-1 | KOLESO OZUBENÉ 57 | 1 | N/A |
| 69 | 267398-0 | Flat Washer 12 | 1 | N/A |
| 70 | 424167-4 | Seal Ring | 1 | N/A |
| 71 | 158859-0 | KRYT LOŽISKA HM1213C | 1 | N/A |
| 72 | 213231-4 | SIMMEROV KRÚŽOK 15 HR4500C | 1 | N/A |
| 73 | 331596-3 | KRUZOK 12 HR4500C | 1 | N/A |
| 74 | 211249-9 | LOŽISKO GULIČKOVÉ HM1213 | 1 | N/A |
| 75 | 267397-2 | FLAT WASHER 15 | 1 | N/A |
| 76 | 240003-4 | KOLESO VENTILÁTORA 80 2702/DA4030/TW1 | 1 | N/A |
| 77 | 517818-7 | KOTVA UPLNA 220-240V HM1213 | 1 | N/A |
| 77 | | *** INC. 73-76,78,79 | | N/A |
| 78 | 681642-5 | IZOLACNA PODLOZKA | 1 | N/A |
| 79 | 210059-1 | LOŽISKO GULIČKOVÉ 6000DDW | 1 | N/A |
| 79.2 | 211289-7 | LOŽISKO GULIČKOVÉ HM1203 | 1 | N/A |
| 80 | 450900-8 | BAFFLE PLATE | 1 | N/A |
| 81 | 266095-5 | SKRUTKA 5X55 | 2 | N/A |
| 82 | 636303-2 | STATOR 220V NA HR5201C/5210C/5211C | 1 | N/A |
| 83 | 450904-0 | KRYT MOTORA HM1213C/1203C | 1 | N/A |
| 84 | 638447-4 | DRŽIAK UHLÍKOV | 1 | N/A |
| 84.2 | 632D00-2 | KOHELENHALTEREINHEIT HR5211C | 1 | N/A |
| 85 | 194412-8 | UHLÍKY CB-171 | 1 | N/A |
| 85.2 | 195844-2 | UHLÍKY CB-175 | 1 | N/A |
| 86 | 450901-6 | REAR COVER | 1 | N/A |
| 87 | 266041-8 | SKRUTKA SAMOREZNÁ 5X25 HR2010 | 3 | N/A |
| 88 | 265995-6 | SKRUTKA SAMOREZNÁ 4x18 | 4 | N/A |
| 89 | 266192-7 | SKRUTKA SAMOREZNÁ 4x14 HR4010C | 2 | N/A |



Makita Werkzeug Ges.m.b.H.

Airportstr. 4, 2401 Fischamend

Tel: 02232 / 777 00

Fax: 02232 / 777 00 - 40

Mail: verkauf@makita.at

Web: www.makita.at

Makita Service Information / Model: HM1203C

| POS | Bestell-Nr. | Artikelbeschreibung | Stk. | Stk.Preis |
|--------|-------------|--------------------------------|------|-----------|
| 89.2 | 266300-0 | TAPPING SCREW 4x18 | 2 | N/A |
| 90 | 631869-7 | ELEKTRONIKA REGULAČNÁ HM1203C | 1 | N/A |
| 91 | 638650-7 | LEAD UNIT | 1 | N/A |
| 92 | 419010-0 | ŠOŠOVKA HR4011C | 1 | N/A |
| 99 | 232209-8 | PERO LISTOVÉ HM0860C | 1 | N/A |
| 100 | 450891-3 | LEVER STOPPER | 1 | N/A |
| 101 | 866622-4 | NAME PLATE | 1 | N/A |
| 101.2 | 814544-6 | TYPENSCHILD HM1203C | 1 | N/A |
| 102 | 266041-8 | SKRUTKA SAMOREZNÁ 5X25 HR2010 | 6 | N/A |
| 103 | 450897-1 | SLIDE LEVER | 1 | N/A |
| 106 | 450907-4 | Handle | 1 | N/A |
| 107 | 263027-3 | KOLÍK GUMENÝ 4 HM0860C/HR4010C | 1 | N/A |
| 108 | 651423-1 | VYPINAC 3706-3707 | 1 | N/A |
| 109 | 423379-6 | SPONGE SHEET | 1 | N/A |
| 110 | 654531-7 | SVORKOVNICA HT-345 | 1 | N/A |
| 111 | 682560-0 | CHRÁNIČ ŠNÚRY 10 | 1 | N/A |
| 112 | 695123-3 | KÁBEL | 1 | N/A |
| 113 | 687169-3 | DRŽIAK KÁBLA HP1620/1621 | 1 | N/A |
| 114 | 265995-6 | SKRUTKA SAMOREZNÁ 4x18 | 1 | N/A |
| 115 | 450908-2 | HANDLE COVER | 1 | N/A |
| 116 | 265995-6 | SKRUTKA SAMOREZNÁ 4x18 | 2 | N/A |
| 117 | 265439-6 | SKRUTKA M8x150 | 1 | N/A |
| 118 | 417002-3 | VACKA PRIDAVNEJ RUKOVÄTE | 1 | N/A |
| 119 | 318505-9 | SIDE HANDLE BASE 82A | 1 | N/A |
| 120 | 951166-8 | PRUŽNÝ KOLÍK 5-24 951166-8 | 1 | N/A |
| 121 | 318506-7 | SIDE HANDLE BASE 82B | 1 | N/A |
| 122 | 417003-1 | PRIDAVNA RUKOVÄT HM1213C | 1 | N/A |
| 123 | 417002-3 | VACKA PRIDAVNEJ RUKOVÄTE | 1 | N/A |
| 124 | 252640-2 | MATICA KRÍDLOVÁ M8 | 1 | N/A |
| 125 | 267164-5 | *FLAT WASHER 15 | 1 | N/A |
| 127 | 135269-8 | SIDE HANDLE 82 ASS'Y | 1 | N/A |
| 127 | | *** INC. 117-124 | | N/A |
| 128 | 801Y75-0 | CLEAR LABEL | 1 | N/A |
| 1001 | A-80787 | BULL POINT 280 SDS-MAX | 1 | N/A |
| 1002 | 194659-4 | GREASE VESSEL SET | 1 | N/A |
| 1002.2 | 194683-7 | GREASE VESSEL SET | 1 | N/A |
| 1003 | 443122-7 | UTIERKA HR4011C | 1 | N/A |
| 1004 | 824876-9 | PLASTIC CARRRYING CASE | 1 | N/A |
| 1005 | 809279-8 | Plastic case Label | 2 | N/A |
| 1005.2 | 801Y47-5 | Aufkleber zu Koffer HM1203C | 2 | N/A |