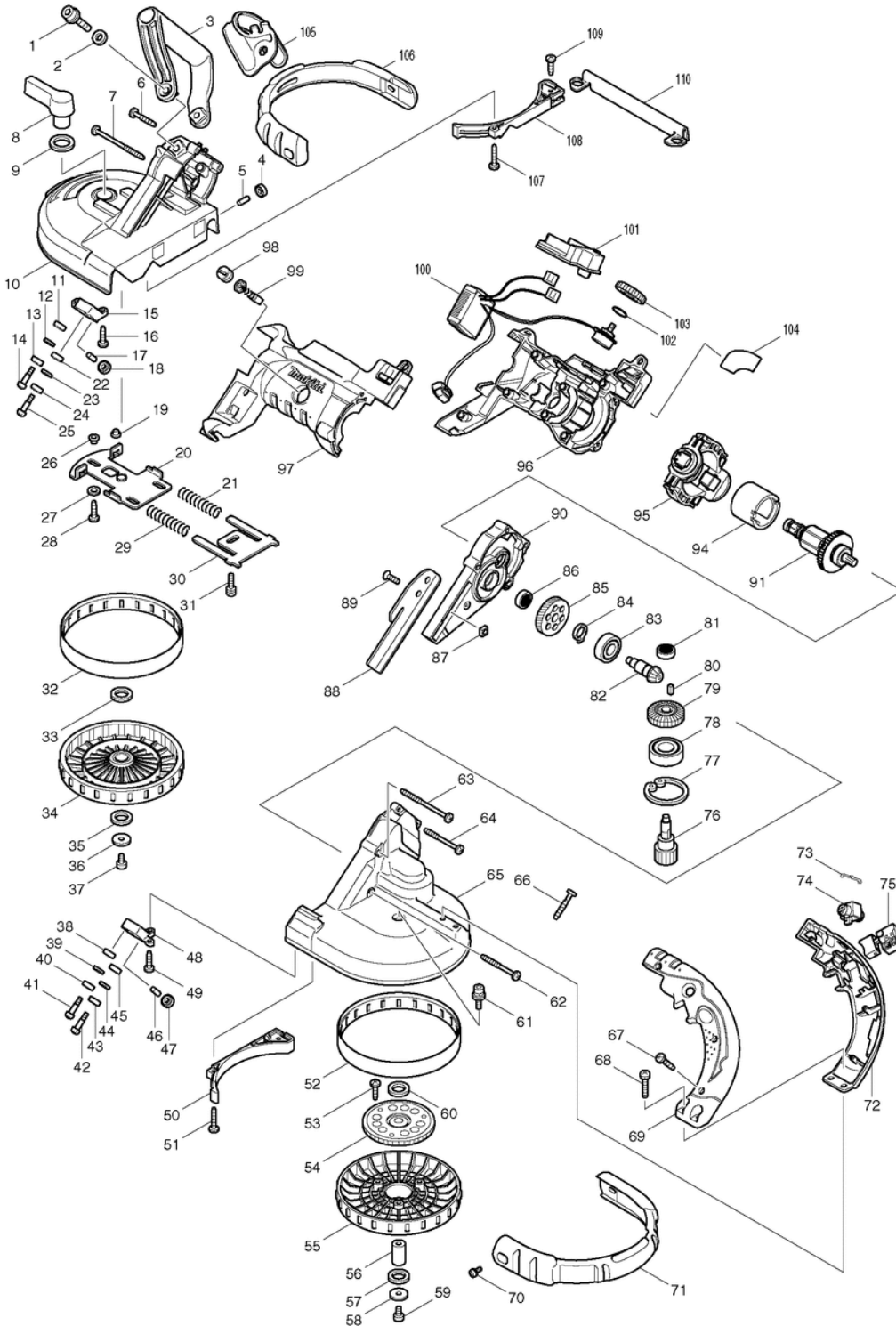




Makita Service Information / Model: BPB180





Makita Werkzeug Ges.m.b.H.

Airportstr. 4, 2401 Fischamend

Tel: 02232 / 777 00

Fax: 02232 / 777 00 - 40

Mail: verkauf@makita.at

Web: www.makita.at

Makita Service Information / Model: BPB180

POS	Bestell-Nr.	Artikelbeschreibung	Stk.	Stk.Preis
1	922456-6	SKRUTKA INBUS M8x35	2	N/A
2	941202-8	PODLOZKA 8	2	N/A
3	273525-9	Grip	1	N/A
4	210033-9	LOŽISKO GULIČKOVÉ 696ZZ 2107FK/9554	1	N/A
5	256033-5	KOLÍK 6	1	N/A
6	265999-8	SKRUTKA SAMOREZNÁ 4x25	2	N/A
7	266147-2	SKRUTKA SAMOREZNÁ 4x55	2	N/A
8	272223-2	LEVER 60	1	N/A
9	267041-1	PODLOŽKA 20 2106/9077-79F/SF	1	N/A
10	154658-8	FRONT WHEEL COVER COMPLETE	1	N/A
10.2	158703-1	FRONT WHEEL COVER COMPL. new	1	N/A
11	210033-9	LOŽISKO GULIČKOVÉ 696ZZ 2107FK/9554	1	N/A
12	941152-7	PODLOZKA 6	1	N/A
13	210033-9	LOŽISKO GULIČKOVÉ 696ZZ 2107FK/9554	1	N/A
14	251337-0	PAN HEAD SCREW 16	1	N/A
15	317824-0	UPPER HOLDER	1	N/A
16	266034-5	SKRUTKA SAMOREZNÁ CT 4x16	2	N/A
17	256033-5	KOLÍK 6	1	N/A
18	210033-9	LOŽISKO GULIČKOVÉ 696ZZ 2107FK/9554	1	N/A
19	343494-9	SLEEVE 5	1	N/A
20	163276-1	PLATŇA 2106/2107FK	1	N/A
21	231449-5	PRUŽINA PRÍTLAČNÁ 11 2106/2107FK	1	N/A
22	210033-9	LOŽISKO GULIČKOVÉ 696ZZ 2107FK/9554	1	N/A
23	941152-7	PODLOZKA 6	1	N/A
24	210033-9	LOŽISKO GULIČKOVÉ 696ZZ 2107FK/9554	1	N/A
25	251337-0	PAN HEAD SCREW 16	1	N/A
26	343494-9	SLEEVE 5	3	N/A
27	941051-3	PODLOŽKA 4 CL070DS/AN711H	3	N/A
28	266034-5	SKRUTKA SAMOREZNÁ CT 4x16	3	N/A
29	231449-5	PRUŽINA PRÍTLAČNÁ 11 2106/2107FK	1	N/A
30	343489-2	TENSION PLATE	1	N/A
31	911221-8	SKRUTKA M5x16	1	N/A
32	421333-4	GUMENE TESNENIE 2106/21106W	1	N/A
33	253749-3	PODLOŽKA 16	1	N/A
34	152325-9	KOLESO KPL. 2106/W/2107FK	1	N/A
35	253749-3	PODLOŽKA 16	1	N/A
36	253010-8	FLAT WASHER 6	1	N/A
37	922312-0	IMBUSOVA SKRUTKA M6X12 4122	1	N/A
38	210033-9	LOŽISKO GULIČKOVÉ 696ZZ 2107FK/9554	1	N/A
39	941152-7	PODLOZKA 6	1	N/A



Makita Werkzeug Ges.m.b.H.

Airportstr. 4, 2401 Fischamend

Tel: 02232 / 777 00

Fax: 02232 / 777 00 - 40

Mail: verkauf@makita.at

Web: www.makita.at

Makita Service Information / Model: BPB180

POS	Bestell-Nr.	Artikelbeschreibung	Stk.	Stk.Preis
40	210033-9	LOŽISKO GULIČKOVÉ 696ZZ 2107FK/9554	1	N/A
41	251337-0	PAN HEAD SCREW 16	1	N/A
42	251337-0	PAN HEAD SCREW 16	1	N/A
43	210033-9	LOŽISKO GULIČKOVÉ 696ZZ 2107FK/9554	1	N/A
44	941152-7	PODLOŽKA 6	1	N/A
45	210033-9	LOŽISKO GULIČKOVÉ 696ZZ 2107FK/9554	1	N/A
46	256033-5	KOLÍK 6	1	N/A
47	210033-9	LOŽISKO GULIČKOVÉ 696ZZ 2107FK/9554	1	N/A
48	317823-2	LOWER HOLDER	1	N/A
49	266034-5	SKRUTKA SAMOREZNÁ CT 4x16	2	N/A
50	418784-0	SAW GUARD HOLDER	1	N/A
51	266042-6	SKRUTKA SAMOREZNÁ CT 4x20	2	N/A
52	421333-4	GUMENE TESNENIE 2106/21106W	1	N/A
53	266021-4	SKRUTKA SAMOREZNÁ 5x20	3	N/A
54	154949-7	GEAR COMPLETE	1	N/A
55	419506-1	WHEEL	1	N/A
56	324513-0	Lower shaft	1	N/A
57	253749-3	PODLOŽKA 16	1	N/A
58	253010-8	FLAT WASHER 6	1	N/A
59	922312-0	IMBUSOVA SKRUTKA M6X12 4122	1	N/A
60	253749-3	PODLOŽKA 16	1	N/A
61	922323-5	HEX. SOCKET HEAD BOLT M6x16	1	N/A
62	266203-8	TAPPING SCREW BIND CT4x40	1	N/A
63	266147-2	SKRUTKA SAMOREZNÁ 4x55	2	N/A
64	266048-4	SKRUTKA SAMOREZNÁ 4x40	2	N/A
65	317947-4	REAR WHEEL COVER	1	N/A
66	265995-6	SKRUTKA SAMOREZNÁ 4x18	8	N/A
67	265995-6	SKRUTKA SAMOREZNÁ 4x18	2	N/A
68	911243-8	SKRUTKA M5x25	2	N/A
69	188108-1	HANDLE SET	1	N/A
69		*** INC. 72		N/A
70	911213-7	SKRUTKA M5x12	4	N/A
71	168412-4	REAR BUMPER	1	N/A
72	188108-1	HANDLE SET	1	N/A
72		*** INC. 69		N/A
73	232201-4	PERO LISTOVÉ PV7000C/BFL300-400F	1	N/A
74	419504-5	LOCK OFF BUTTON	1	N/A
75	650229-4	SWITCH SGE120C-3	1	N/A
76	227170-2	Spur Gear 12	1	N/A
77	962203-3	POISTNÝ KRÚŽOK R-47 962203-3	1	N/A



Makita Werkzeug Ges.m.b.H.

Airportstr. 4, 2401 Fischamend

Tel: 02232 / 777 00

Fax: 02232 / 777 00 - 40

Mail: verkauf@makita.at

Web: www.makita.at

Makita Service Information / Model: BPB180

POS	Bestell-Nr.	Artikelbeschreibung	Stk.	Stk.Preis
78	211306-3	LOŽISKO GULIČKOVÉ 6240LLB LS1440	1	N/A
79	227470-0	SPIRAL BEVEL GEAR 29	1	N/A
80	254202-2	KLIN 4	1	N/A
81	211031-6	LOŽISKO GULIČKOVÉ 608LLB	1	N/A
81.2	210029-0	LOŽISKO GULIČKOVÉ 608ZZ	1	N/A
82	227481-5	SPIRAL BEVEL GEAR 11	1	N/A
83	211206-7	LOŽISKO GULIČKOVÉ 6202LLB	1	N/A
83.2	211241-5	LOŽISKO GULIČKOVÉ 6202DDW MT601/811	1	N/A
84	961055-9	POISTNÝ KRÚŽOK S-15 3706-3708	1	N/A
85	226626-2	HELICAL GEAR 45	1	N/A
86	211031-6	LOŽISKO GULIČKOVÉ 608LLB	1	N/A
86.2	210029-0	LOŽISKO GULIČKOVÉ 608ZZ	1	N/A
87	252157-5	SQUARE NUT M6	2	N/A
88	345467-8	STOPPER PLATE	1	N/A
89	251981-3	HEX. SOCKET HEAD BOLT M6x16	2	N/A
90	154475-6	GEAR HOUSING COMPLETE	1	N/A
91	619187-3	ARMATURE	1	N/A
94	638420-4	YOKE UNIT	1	N/A
94.2	638420-4	YOKE UNIT	1	N/A
95	638449-0	Endbell Complete	1	N/A
95.2	638919-9	Endbell Complete	1	N/A
96	188107-3	Housing set	1	N/A
96		*** INC. 97		N/A
96.2	187801-4	HOUSING SET	1	N/A
96.2		*** INC. 97		N/A
97	188107-3	Housing set	1	N/A
97		*** INC. 96		N/A
97.2	187801-4	HOUSING SET	1	N/A
97.2		*** INC. 96		N/A
98	643929-3	VIEČKO	2	N/A
99	191971-3	UHLÍKY CB-430, 438 (CB-420)	1	N/A
100	631722-7	CONTROLLER	1	N/A
100.2	638917-3	CONTROLLER UNIT	1	N/A
100.3	632B82-2	CONTROLLER UNIT	1	N/A
101	643812-4	KONTAKT BTD/BDF/BHP	1	N/A
101.2	644808-8	ANSCHLUSSKLEMME	1	N/A
102	213261-5	O-KRÚŽOK 17	1	N/A
103	419505-3	DIAL	1	N/A
104	862499-5	NAME PLATE BPB180	1	N/A
106	168413-2	FRONT BUMPER	1	N/A



Makita Werkzeug Ges.m.b.H.

Airportstr. 4, 2401 Fischamend

Tel: 02232 / 777 00

Fax: 02232 / 777 00 - 40

Mail: verkauf@makita.at

Web: www.makita.at

Makita Service Information / Model: BPB180

POS	Bestell-Nr.	Artikelbeschreibung	Stk.	Stk.Preis
107	266042-6	SKRUTKA SAMOREZNÁ CT 4x20	2	N/A
108	418784-0	SAW GUARD HOLDER	1	N/A
109	266034-5	SKRUTKA SAMOREZNÁ CT 4x16	1	N/A
110	345468-6	Saw guard	1	N/A
110.2	346669-9	Saw guard	1	N/A
1001	***DC18RA	DC18RA FAST CHARGER	1	N/A
1001.2	***DC18RC	DC18RC FAST CHARGER	1	N/A
1002	194204-5	BATTERY BL1830 SET	2	N/A
1002.2	194204-5	BATTERY BL1830 SET	2	N/A
1002.3	194204-5	BATTERY BL1830 SET	2	N/A
1002.4	194204-5	BATTERY BL1830 SET	2	N/A
1002.5	194204-5	BATTERY BL1830 SET	2	N/A
1002.6	194204-5	BATTERY BL1830 SET	2	N/A
1003	B-10350	BAND SAW BLADE 18 BIMETAL	1	N/A
1004	783202-0	HEX. WRENCH 4	1	N/A
1005	824766-6	PLASTIC CARRYING CASE	1	N/A
1005.2	141496-7	PLASTIC CARRYING CASE	1	N/A
1006	450128-8	BATTERY COVER	1	N/A
5001	688172-7	LINE FILTER	1	N/A