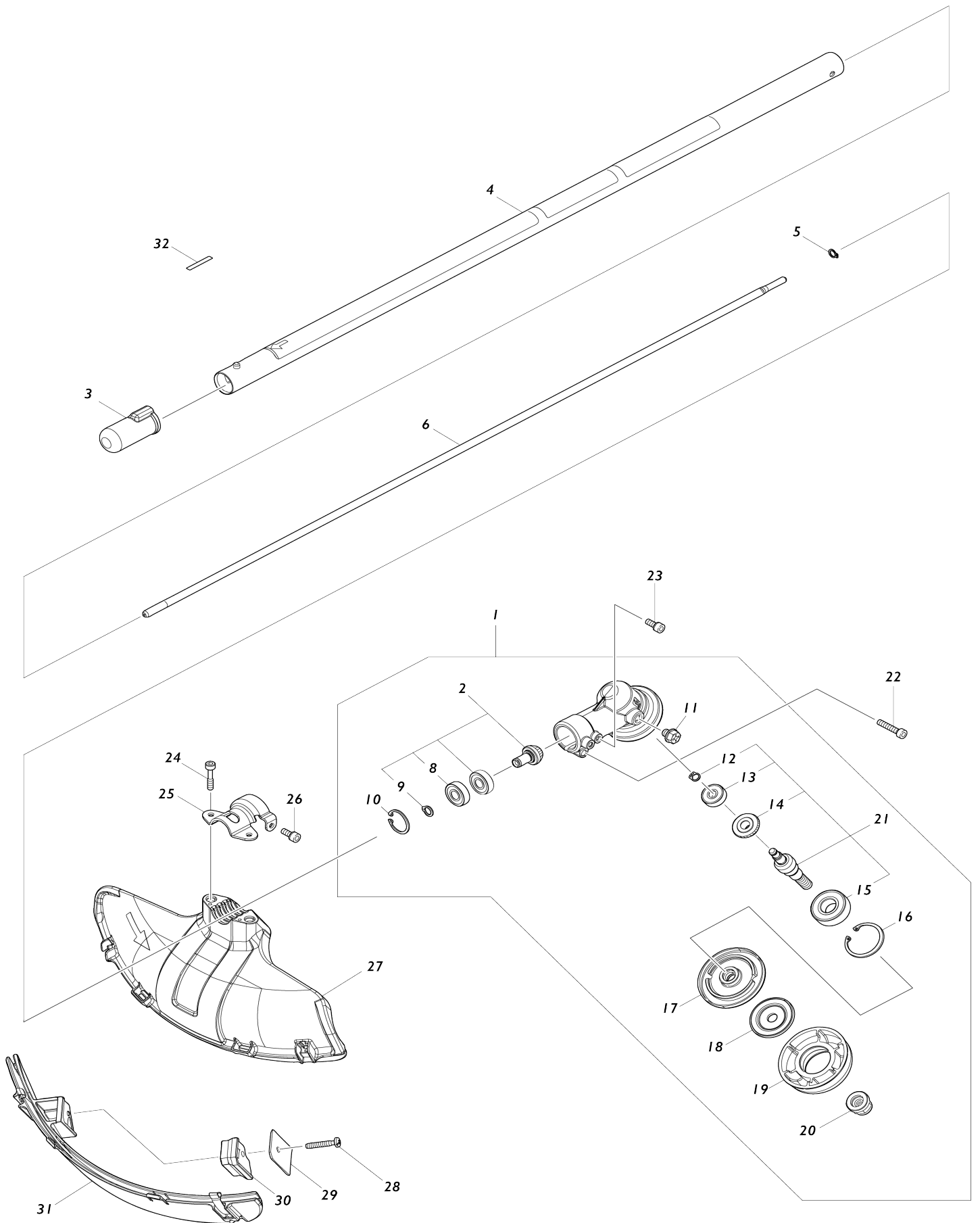


Model No.EM408MP GRASS TRIMMER ATTACHMENT



Model No.EM408MP GRASS TRIMMER ATTACHMENT

Item No.	Parts No.	Description	Interchangability	Q'ty	New/Old	Note1	Note2
001	127711-3	GEAR CASE ASSEMBLY US		1			
001		INC. 2,10,11,16-21					
002	136374-4	SPIRAL BEVEL GEAR ASS'Y		1			
002		INC. 8,9					
003	424434-7	CAP 24		1			
004	140Y52-0	SHAFT PIPE A COMPLETE A		1			
C10	819312-8	MAKITA LOGO LABEL		1			
C20	8025E6-7	CAUTION LABEL		1			
C30	8025E7-5	SOUND LABEL		1			
005	961003-8	RETAINING RING S-7		1			
006	327723-8	SHAFT A		1			
008	210157-1	BALL BEARING 609ZZ		2			
009	259071-6	RETAINING RING (EXT) S-9		1			
010	259072-4	RETAINING RING (INT)R-24		1			
011	265590-2	+HEX.BOLT M8X10 WITH R		1			
012	259070-8	RETAINING RING (EXT) S-7		1			
013	210030-5	BALL BEARING 627ZZ		1			
014	226988-8	SPIRAL BEVEL GEAR 19		1			
015	211228-7	BALL BEARING 620DDW		1			
016	259069-3	RETAINING RING (INT) R-35		1			
017	140N88-3	RECEIVE WASHER COMPLETE		1			
018	347766-4	CLAMP WASHER US		1			
019	413201-5	CUP US		1			
020	252236-9	HEX. LOCK NUT M10-17		1			
021	136375-2	CUTTER SHAFT ASS'Y		1			
021		INC. 12-15					
022	922242-5	HEX. SOCKET HEAD BOLT M5X25		1			
023	922216-6	H.S.H.BOLT M5X14 WITH W		1			
024	251513-6	H.S.H.BOLT M5X25		2			
025	347107-4	PROTECTOR CLAMP 24		1			
026	922216-6	H.S.H.BOLT M5X14 WITH W		1			
027	412969-0	PROTECTOR U 330		1			
028	266553-1	TAPPING SCREW 5X30		1			
029	347115-5	CUTTER		1			
030	457794-2	CUTTER EXTENSION		1			
031	140X35-4	PROTECTOR U EXT. 300-330 COMP		1			
032	814A82-0	DATE CODE LABEL		1			
A01	782238-6	BOX WRENCH 17		1			
A02	191D89-4	TRIMMER HEAD 96-M10L SET		1			
F03	197472-9	NYLON CORD 2.0-15M SET		1			
F04	197473-7	NYLON CORD 2.0-30M SET		1			
F05	197474-5	NYLON CORD 2.0-160M SET		1			
F06	197475-3	NYLON CORD 2.0-280M SET		1			
F08	191N31-5	GRASS TRIMMER ATTACH A SET		1			
F47	1915D8-4	TRIMMER HEAD ASSEMBLY 98-M10L		1			
F48	1914R8-6	TRIMMER HEAD ASSEMBLY 98-M		1			

		10L					
--	--	-----	--	--	--	--	--

Please state Parts No. when your order.

Print Date 13. 01. 2025